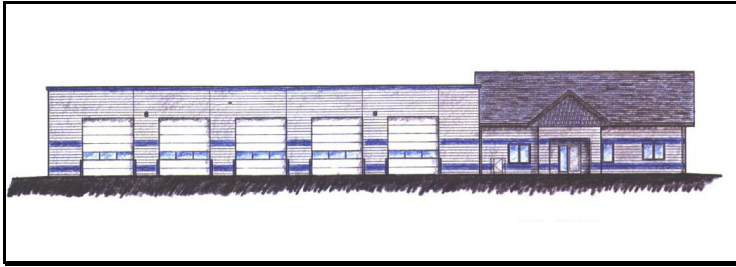


Frankfort City Fire & Rescue



Front Building Elevation

45th Parallel Construction Management, Inc. (45cm) was retained by the City of Frankfort to provide professional construction management services for the planning, design, bidding and construction phases for this project.

The facility will meet the needs of the fire department for many years to come. It has the ability to house fire department personnel on a full-time basis with full kitchen and shower amenities. The truck bay is designed as a “drive-through” and has integral floor drain with sloping concrete floors.

The city wanted to maximize size and usability of the facility on a limited budget. This was achieved through value engineering and the collaborative efforts of 45cm, aai, and the City of Frankfort.

The construction costs after the bidding phase were slightly under 2% less than the final projected budget established by 45cm.

45cm coordinated all aspects of the construction process including: bidding of all trades, contractor scheduling, contracts, supervision, progress meetings, payment draws, sworn statements, lien waivers, shop drawing and color selections, inspection and testing and project closeout. The project was completed under budget in May, 2006.

PROJECT PROFILE

Frankfort City Fire & Rescue Frankfort, MI	
Architect:	aai Architects Robert Sommerville, AIA
Project Type:	Fire Department
Materials:	SF CMU bearing walls Steel joist/deck roof Wood truss roof
Building size:	7,140 SF Truck Bay <u>2,750 SF Administration</u> 9,890 SF Total
Contact:	Josh Mills City Superintendent (231) 352-7117
Complete project cost:	\$896,000
Cost per square foot:	\$90
Completion date:	May 2006



Building Under Construction



Building Completed